



## Plastic butterfly valve

- Manually operated / automatable
- For aggressive media
- Low torques
- Long lifespan
- Maintenance friendly

Product variants described in the data sheet may differ from the product presentation and description.

### Can be combined with

	<b>Type 2052</b> Pneumatic rotary actuator	▶
	<b>Type 2051</b> Pneumatic rotary actuator	▶
	<b>Type 3003</b> Electrical Rotary Actuator - On/Off and control	▶
	<b>Type 3004</b> Explosion Proof Rotary Actuator - On/Off and control	▶
	<b>Type 3005</b> Electric Rotary Actuator - On/Off and Control	▶
	<b>Type 1061</b> Accessory for pneumatic rotary actuators	▶
	<b>Type 8792</b> Digital electropneumatic Positioner SideControl	▶
	<b>Type 2657</b> Ball Valve, manually-operated	▶

### Type description

2/2 way plastic butterfly valves used for control and on/off operations. Type 2674 can be connected via the mechanical interface (acc. to ISO 5211) with pneumatic (for example, type 2051 or 2052) and electrical rotary actuators (for example, type 3003, 3004 or 3005). Next to this, the valve is available with different kinds of liner (EPDM, FPM), housing (PVC-U, PP-GR) and disc (PVC-U, PP-H, PVDF, PVC-C) materials. Consequently, type 2674 is suited for various aggressive media and meets the requirements of different applications and processes.

## Table of contents

<b>1. General Technical Data</b>	<b>3</b>
<b>2. Materials</b>	<b>3</b>
2.1. Chemical Resistance Chart – Bürkert resistApp.....	3
2.2. Material specifications FE Butterfly valve DN 40...DN 50 .....	4
2.3. Material specifications FE Butterfly valve DN 65...DN 200 .....	4
2.4. Material specifications FK Butterfly valve DN 40...DN 50 .....	5
2.5. Material specifications FK Butterfly valve DN 65...DN 200 .....	6
2.6. Material specifications FK Butterfly valve DN 250...DN 300 .....	6
<b>3. Dimensions</b>	<b>7</b>
3.1. Dimensions for FE Butterfly valve.....	7
3.2. Dimensions for FK Butterfly valve.....	8
<b>4. Performance specifications</b>	<b>9</b>
4.1. Pressure temperature diagram.....	9
4.2. Flow characteristic.....	9
Flow diagram .....	9
4.3. Torques .....	9
4.4. $K_{vs}$ values (for water).....	10
<b>5. Ordering information</b>	<b>10</b>
5.1. Bürkert eShop – Easy ordering and quick delivery.....	10
5.2. Bürkert product filter.....	10
5.3. Ordering chart Body: PVC-U / Disc: PVC-U.....	10
5.4. Ordering chart Body: PP-GR / Disc: PVC-U.....	11
5.5. Ordering chart Body: PP-GR / Disc: PP-H .....	11
5.6. Ordering chart Body: PP-GR / Disc: PVDF.....	12

## 1. General Technical Data

Product properties	
Dimensions	Detailed information can be found in chapter <a href="#">“3. Dimensions”</a> on page 7.
Material	
Body	PVC-U (FE version) / PP-GR (FK version)
Disc	PVC-U / PP-H / PVDF / PVC-C (on request)
Seal	EPDM, FPM
Body	Wafer flange, end flange (on request)
Nominal diameter	DN 40...300
Medium data	
Medium temperature	PVC-U: 0...+60 °C PP: 0...+90 °C PVDF: 0...+100 °C PVC-C: 0...+100 °C
Medium pressure	Depending on the materials used - see <a href="#">“4.1. Pressure temperature diagram”</a> on page 9.
Process/Port connection & communication	
Port connection	DIN 2501, ISO DIS 9624, UNI 2223 BS 10 table D/E ASA B16.5 class 150 JIS 2212 (K10 except for DN 200 / DN 300), JIS 2212 (K5 except for DN 50) Detailed information can be found in chapter <a href="#">“4.2. Flow characteristic”</a> on page 9.
Approvals and certificates	
ISO Top flanges	EN ISO 5211

## 2. Materials

### 2.1. Chemical Resistance Chart – Bürkert resistApp

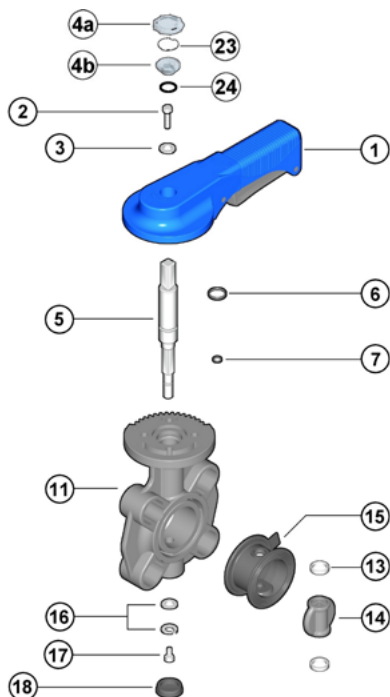


#### Bürkert resistApp – Chemical Resistance Chart

You want to ensure the reliability and durability of the materials in your individual application case? Verify your combination of media and materials on our website or in our resistApp.

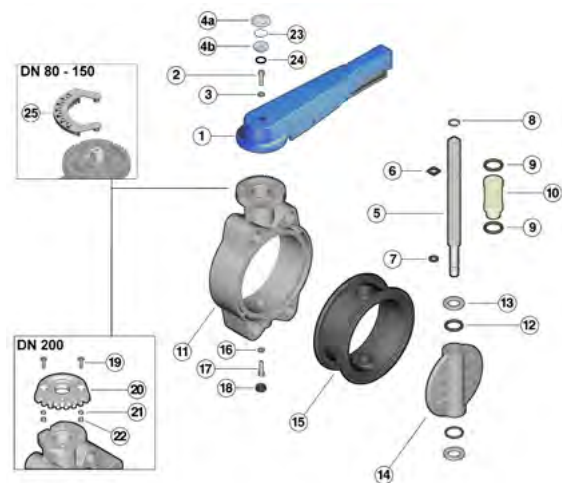
[Start Chemical Resistance Check](#)

### 2.2. Material specifications FE Butterfly valve DN 40...DN 50



No.	Element	Quantity	Material
1	Handle	1	HIPVC
2	Screw	1	Stainless steel
3	Washer	1	Stainless steel
4a/b	Transparent protection plug	1	PVC
5	Stem	1	Zinc plated steel
6	Stem O-ring	1	EPDM or FPM
7	Stem O-ring	1	EPDM or FPM
11	Body	1	PVC-U
13	Antifriction ring	2	PTFE
14	Disc	1	PVC-U
15	Liner	1	EPDM oder FPM
16	Washer	1	Stahl
17	Screw	1	Stainless steel
18	Protection plug	1	PE
23	Tag holder	1	PVC-U
24	O-ring	2	NBR
25	Position indicator	1	PVC-U

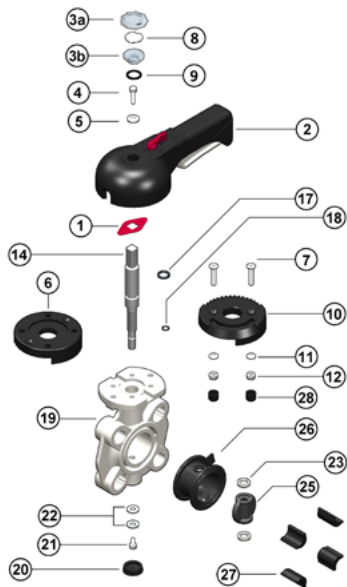
### 2.3. Material specifications FE Butterfly valve DN 65...DN 200



No.	Element	Quantity	Material
1	Handle	1	HIPVC
2	Screw	1	Stainless steel
3	Washer	1	Stainless steel
4a/b	Transparent protection plug	1	PVC
5	Stem	1	Zinc plated steel
6	Stem O-ring	1	EPDM or FPM
7	Stem O-ring	1	EPDM or FPM
8	Seeger ring	1	Stainless steel
9	Bush O-ring	2	EPDM or FPM
10	Bush	1	Nylon
11	Body	1	PVC-U
12	Disc O-ring	2	EPDM or FPM
13	Antifriction ring	2	PTFE
14	Disc	1	PVC-U
15	Liner	1	EPDM or FPM
16	Washer	1	Steel
17	Screw	1	Stainless steel
18	Protection plug	1	PE
19	Screw	2	Stainless steel
20	Plate	1	PVC-U
21	Washer	2	Stainless steel
22	Nut	2	Stainless steel
23	Tag holder	1	PVC-U
24	O-ring	2	NBR
25	Position indicator	1	PVC-U

DTS 1000302674 EN Version: E Status: RL (released | freigegeben | valide) printed: 06.08.2021

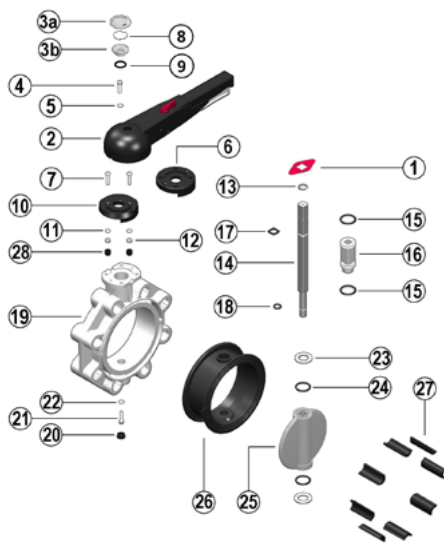
2.4. Material specifications FK Butterfly valve DN 40...DN 50



No.	Element	Quantity	Material
1	Position indicator	1	PA
2	Handle	1	HIPVC
3a/b	Transparent protection plug	1	PVC
4	Fastening screw	1	Stainless steel
5	Washer	1	Stainless steel
6	Flange	1	PP – GR
7	Screw	2	Stainless steel
8	Tag holder	1	PVC – U
9	O-ring	1	NBR
10	Plate	1	PP – GR
11	Washer	2	Stainless steel
12	Nut	2	Stainless steel
14	Stem	1	Stainless steel AISI 316
17	Stem O-ring	1	EPDM or FPM
18	Stem O-ring	1	EPDM or FPM
19	Body	1	PP – GR
20	Protection plug	1	PE
21	Screw	1	Stainless steel
22	Washer	1	Stainless steel
23	Antifriction ring	2	PTFE
25	Disc	1	PVC-U or PP-H or PVDF
26	Liner	1	EPDM or FPM
27	Inserts	4 – 8	ABS
28	Plug	2	PE

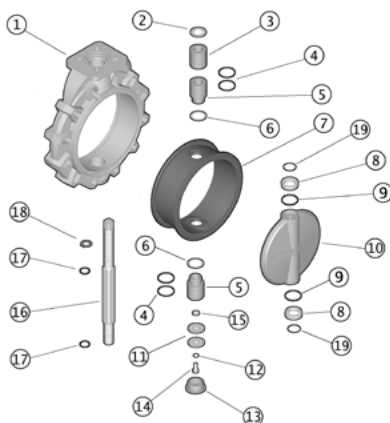
DTS 1000302674 EN Version: E Status: RL (released | freigegeben | validé) printed: 06.08.2021

**2.5. Material specifications FK Butterfly valve DN 65...DN 200**



No.	Element	Quantity	Material
1	Position indicator	1	PA
2	Handle	1	HIPVC
3a/b	Transparent protection plug	1	PVC
4	Fastening screw	1	Stainless steel
5	Washer	1	Stainless steel
6	Flange	1	PP – GR
7	Screw	2	Stainless steel
8	Tag holder	1	PVC – U
9	O-ring	1	NBR
10	Plate	1	PP – GR
11	Washer	2	Stainless steel
12	Nut	2	Stainless steel
13	Seeger ring	1	Stainless steel
14	Stem	1	Stainless steel AISI 316
15	Bush O-ring	2	EPDM or FPM
16	Bush	1	Nylon
17	Stem O-ring	1	EPDM or FPM
18	Stem O-ring	1	EPDM or FPM
19	Body	1	PP – GR
20	Protection plug	1	PE
21	Screw	1	Stainless steel
22	Washer	1	Stainless steel
23	Antifriction ring	2	PTFE
24	Disc O-ring	2	EPDM or FPM
25	Disc	1	PVC-U or PP-H or PVDF
26	Liner	1	EPDM or FPM
27	Inserts	4 – 8	ABS
28	Plug	2	PE

**2.6. Material specifications FK Butterfly valve DN 250...DN 300**



No.	Element	Quantity	Material
1	Body	1	PP – GR
2	Washer	1	Stainless steel
3	Bush	1	PP
4	Bush O-ring	4	EPDM or FPM
5	Bush	2	PP
6	Washer	2	PTFE
7	Liner	1	EPDM or FPM
8	Antifriction ring	2	PTFE
9	Disc O-ring	2	EPDM o. FPM
10	Disc	1	PVC-U or PP-H or PVDF
11	Washer	2	Stainless steel
12	Washer	1	Stainless steel
13	Protection plug	1	PE
14	Screw	1	Stainless steel
15	Washer	1	Stainless steel
16	Stem	1	Stainless steel AISI 316
17	Stem O-ring	2	EPDM or FPM
18	Seeger ring	1	Stainless steel
19	O-ring	2	EPDM or FPM

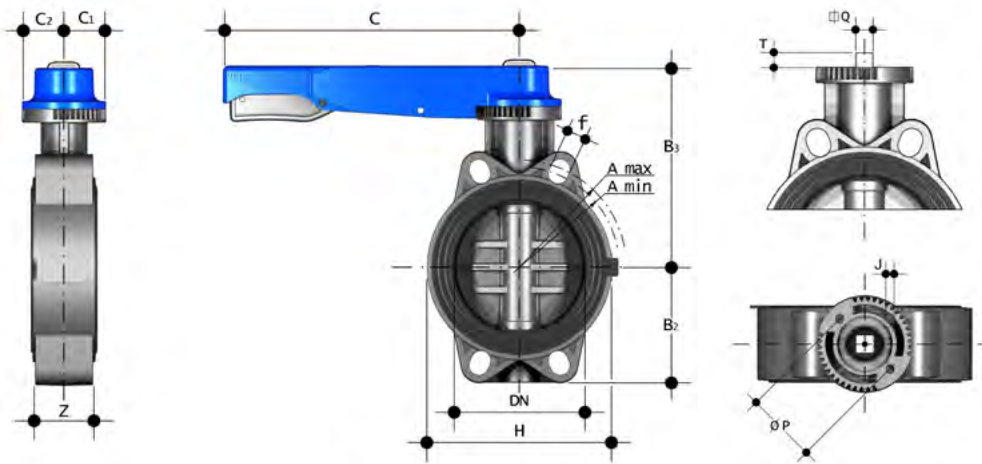
DTS 1000302674 EN Version: E Status: RL (released | freigegeben | valide) printed: 06.08.2021

### 3. Dimensions

#### 3.1. Dimensions for FE Butterfly valve

**Note:**

Dimensions in mm

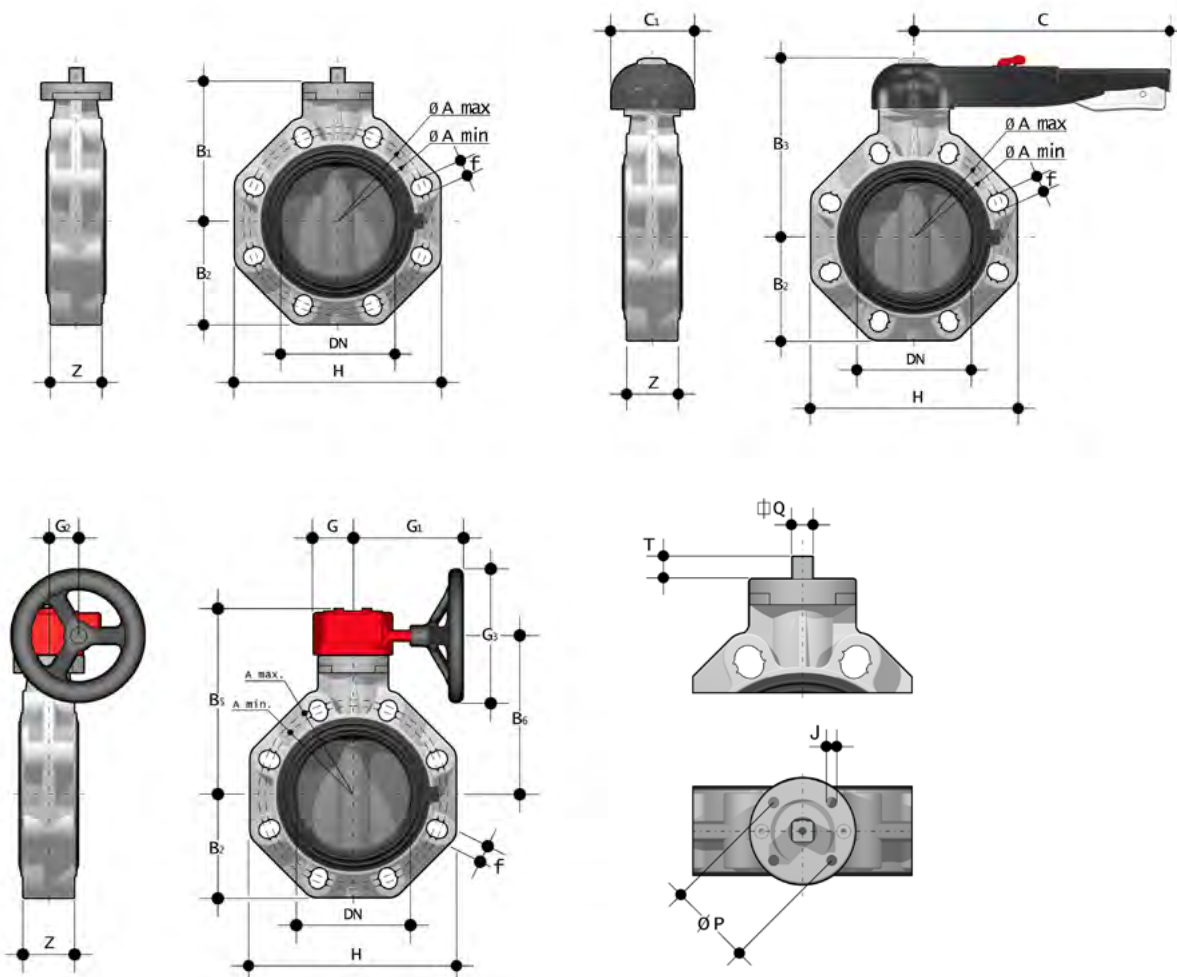


DN	d <sup>1.)</sup>	A <sub>min</sub>	A <sub>max</sub>	B2	B3	C	C1	C2	f	H	U	Z	J	T	Q	P	ISO 5211
40	50	93.5	109.00	60	136	175	45	42	19	132	4	33	7	12	11	50	F05
50	63	108	124.00	70	143	175	45	42	19	147	4	43	7	12	11	50	F05
65	75	128	144.00	80	168	175	45	45	19	165	4	46	7	12	11	50	F05
80	90	145	159.00	90	182	250	45	45	19	130	4	49	9	16	14	70	F07
100	110	165	190.00	105	196	250	45	45	19	150	4	56	9	16	14	70	F07
125	140	204	215.00	121	215	335	45	45	23	185	4	64	9	19	17	70	F07
150	160	230	229.00	132	229	335	45	45	23	210	4	70	9	19	17	70	F07
200	225	280	309.00	161	309	425	65	82	23	325	8	71	11	24	22	102	F10

1.) Ø Port connection [mm]

### 3.2. Dimensions for FK Butterfly valve

**Note:**  
Dimensions in mm



DN	d <sup>1.)</sup>	A <sub>min</sub>	A <sub>max</sub>	B1	B2	B3	C	C1	f	H	U	Z	J	T	Q	P	ISO 5211
40	50	99	109	106	60	137	175	100	19	132	4	33	7	12	11	50	F05
50	63	115	125.5	112	70	143	175	100	19	147	4	43	7	12	11	50	F05
65	75	128	144	119	80	164	175	110	19	165	4	46	7/9	12	11	50/70	F05/07
80	90	145	160	133	93	178	175	100	19	185	8	49	9	16	14	70	F07
100	110	165	190	147	107	192	272	110	19	211	8	56	9	16	14	70	F07
125	140	204	215	167	120	212	330	110	23	240	8	64	9	19	17	70	F07
150	160	230	242	167	134	225	330	110	23	268	8	70	9	19	17	70	F07
200	225	280	298	180	161	272	420	122	23	323	8	71	11	24	22	10	F10

DN	d <sup>1.)</sup>	ØA	B1	B2	B5	B6	G	G 1	G 2	G 3	f	H	U	Z	J	T	Q	P	ISO 5211
250	280	350	248	210	317	281	88	236	76	250	22	405	12	114	11/13/17	29	27	102/125/140	F10/12/14
300	315	400	305	245	374	338	88	236	76	250	22	475	12	114	11/13/17	29	27	102/125/140	F10/12/14

1.) Ø Port connection [mm]

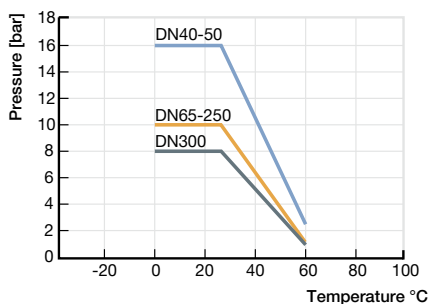
DTS 1000302674 EN Version: RL (released | freigegeben | valide) printed: 06.08.2021



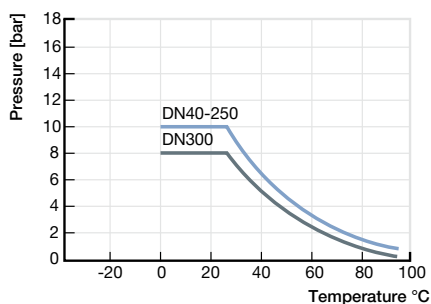
## 4. Performance specifications

### 4.1. Pressure temperature diagram

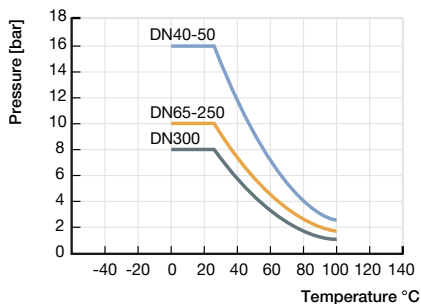
PVC-U



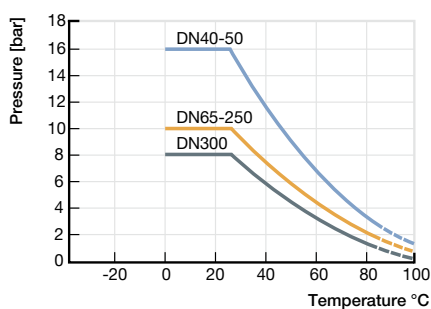
PP-H



PVDF

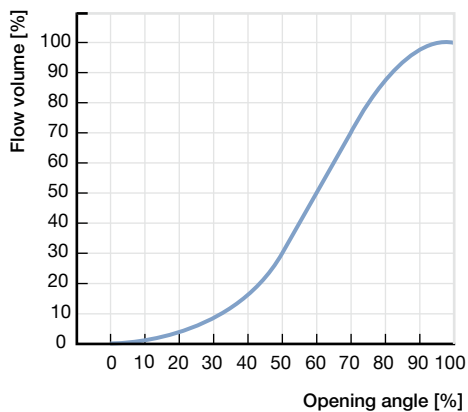


PVC-C



### 4.2. Flow characteristic

#### Flow diagram



### 4.3. Torques

Torques										
Ø Port connection [mm]	50	63	75	90	110	140	160	225	280	315
DN [mm]	40	50	65	80	100	125	150	200	250	300
Torque [Nm] FE butterfly valve	9	10	14	25	43	58	91	142	-	-
Torque [Nm] FK butterfly valve	11	17	23	34	45	64	89	138	306	336

#### 4.4. $K_{vs}$ values (for water)

<b><math>K_{vs}</math> values</b>										
Ø Port connection [mm]	50	63	75	90	110	140	160	225	280	315
DN [mm]	40	50	65	80	100	125	150	200	250	300
$K_{vs}$ [m <sup>3</sup> /h]	60	77.1	102	213	354	591	1122	1830	3192	4896

### 5. Ordering information

#### 5.1. Bürkert eShop – Easy ordering and quick delivery



##### Bürkert eShop – Easy ordering and fast delivery

You want to find your desired Bürkert product or spare part quickly and order directly? Our online shop is available for you 24/7. Sign up and enjoy all the benefits.

[Order online now](#)

#### 5.2. Bürkert product filter















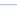



##### Bürkert product filter – Get quickly to the right product

You want to select products comfortably based on your technical requirements? Use the Bürkert product filter and find suitable articles for your application quickly and easily.

[Try out our product filter](#)

#### 5.3. Ordering chart Body: PVC-U / Disc: PVC-U

DN	Port connection [mm]	Pressure range [bar]	Weight [kg]	Article no.	
				EPDM liner	FPM liner
40	50	16	0.83	254375 	208205 
50	63	16	1.01	254376 	293948 
65	75	10	1.42	254378 	208207 
80	90	10	1.64	254379 	208208 
100	110	10	1.99	212081 	293949 
125	140	10	3.03	254384 	293950 
150	160	10	3.73	254385 	293951 
200	225	10	8.24	254386 	293952 

## 5.4. Ordering chart Body: PP-GR / Disc: PVC-U

**Note:**

ASA B.16.5 150 available on request

DN	Port connection	Pressure range	Weight bare shaft	Weight with lever	Article no. bare shaft		Article no. lever (DN 40...200); with manual gear box (DN 250...300)	
	[mm]				[bar]	[kg]	[kg]	EPDM liner
40	50	16	0.57	0.90	293953	293966	293957	293974
50	63	16	0.75	1.08	293954	208206	282059	293975
65	75	10	1.00	1.47	266067	293967	282061	293976
80	90	10	1.40	1.87	265713	277934	282062	277933
100	110	10	1.75	2.22	268247	293968	282063	293977
125	140	10	2.55	3.10	293955	293969	270796	293978
150	160	10	3.30	3.85	264866	293970	265983	293979
200	225	10	6.00	6.75	264864	293971	282064	293980
250 <sup>1.)</sup>	280	10	12.00	18.60	293956	293972	293964	293987
300 <sup>1.)</sup>	315	8	19.00	25.60	284675	293973	293965	293988

1.) acc. ISO-DIN

## 5.5. Ordering chart Body: PP-GR / Disc: PP-H

**Note:**

ASA B.16.5 150 available on request

DN	Port connection	Pressure range	Weight bare shaft	Weight with lever	Article no. bare shaft		Article no. lever (DN 40...200); with manual gear box (DN 250...300)	
	[mm]				[bar]	[kg]	[kg]	EPDM liner
40	50	10	0.47	0.80	293989	208209	293998	294020
50	63	10	0.65	0.98	293990	208210	293999	294021
65	75	10	0.90	1.37	273125	208211	294000	294022
80	90	10	1.30	1.77	293991	208212	294002	294023
100	110	10	1.65	2.12	293992	209928	294003	294024
125	140	10	2.45	3.00	293993	294015	294004	294025
150	160	10	3.20	3.75	293994	294016	294005	294026
200	225	10	5.90	6.65	293995	294017	294006	294027
250 <sup>1.)</sup>	280	10	11.80	18.400	293996	294018	294013	294034
300 <sup>1.)</sup>	315	8	18.70	25.450	293997	294019	294014	294035

1.) acc. ISO-DIN

## 5.6. Ordering chart Body: PP-GR / Disc: PVDF

## Note:

ASA B.16.5 150 available on request

DN	Port connection	Pressure range	Weight bare shaft	Weight with lever	Article no. bare shaft		Article no. lever (DN 40...200); with manual gear box (DN 250...300)	
	[mm]				[bar]	[kg]	[kg]	EPDM liner
40	50	16	0.67	1.00	294216	294036	294229	294044
50	63	16	0.85	1.18	294218	294037	294230	294045
65	75	10	1.10	1.57	294219	294038	294232	277324
80	90	10	1.55	2.02	294220	294039	294233	277325
100	110	10	1.90	2.37	294221	267777	294234	277326
125	140	10	2.75	3.30	294222	294040	294236	294046
150	160	10	3.55	4.10	294224	289253	294237	294047
200	225	10	6.30	7.05	294225	294041	294238	294048
250 <sup>1.)</sup>	280	10	13.00	19.60	294227	294042	294249	294055
300 <sup>1.)</sup>	315	8	21.00	27.60	294228	294043	294250	294056

1.) acc. ISO-DIN

# Bürkert – Close to You

For up-to-date addresses  
please visit us at  
[www.burkert.com](http://www.burkert.com)

DTS 1000302674 EN Version: E Status: RL (released | freigegeben | validé) printed: 06.08.2021

